



Assessing the Impact of Community Coalitions on Youth Substance Abuse

March 20, 2007

Ann Landy
Westat



Presentation Overview: Topic Coverage

- Two studies-similar models
- Substance abuse prevention program models: collaboration rules
- Substance abuse prevention evaluation models: based on program theory
- Evaluation challenges
- Some successes



Two Substance Abuse Prevention Evaluation Studies

- Effectiveness of community coalitions
- Effects of state-level resource management change



Substance Abuse Prevention Programming

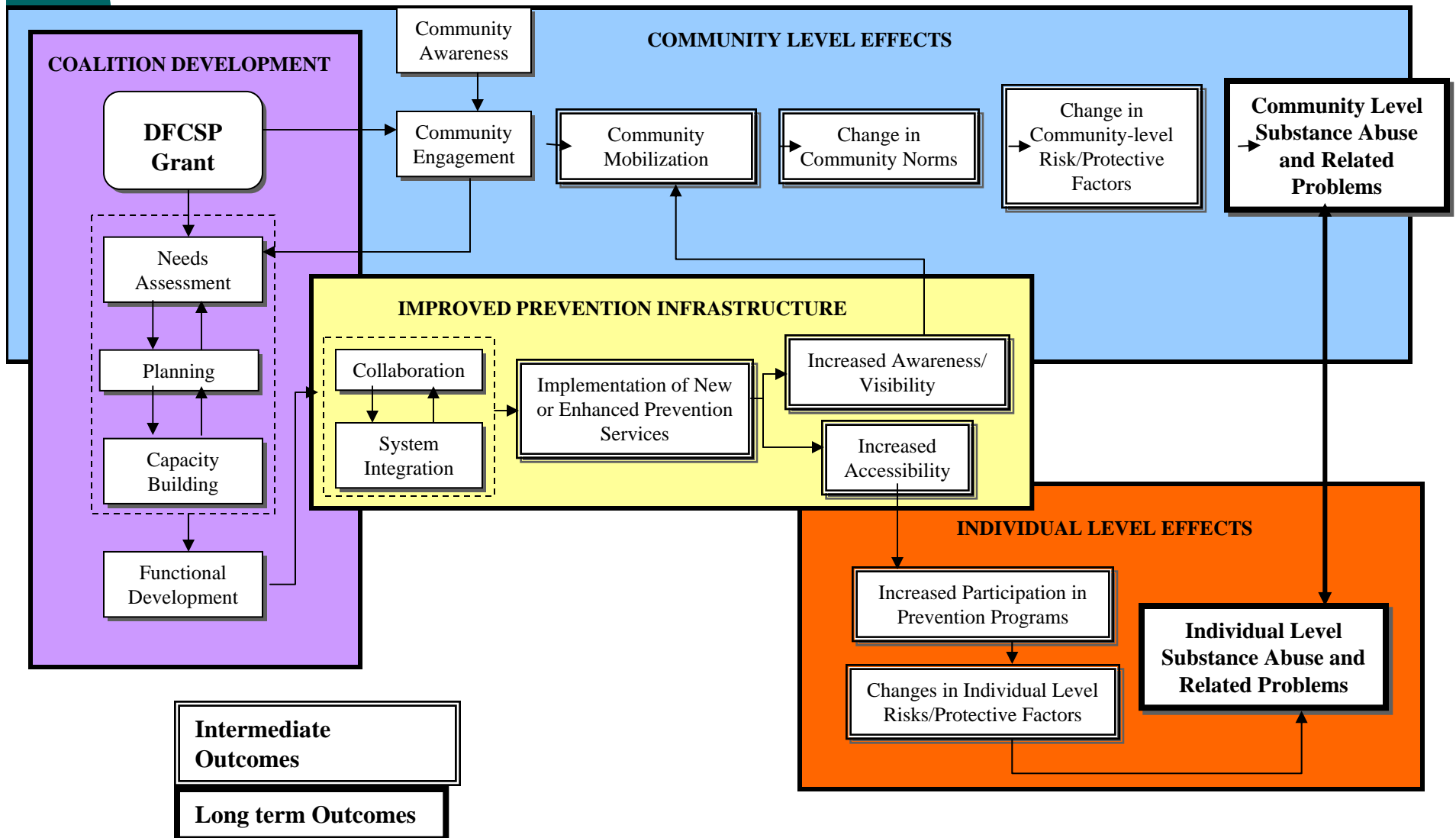
- Collaboration, capacity, and effective planning are necessary pre-conditions for effective prevention service delivery
- Service delivery affects risk and protective factors and substance use



Substance Abuse Prevention Evaluation

- Measure implementation
- Measure outcomes
- Measure the relationship between implementation and outcomes
- Control for baseline differences

Conceptual Framework for Substance Abuse Prevention Evaluation





Design Challenges

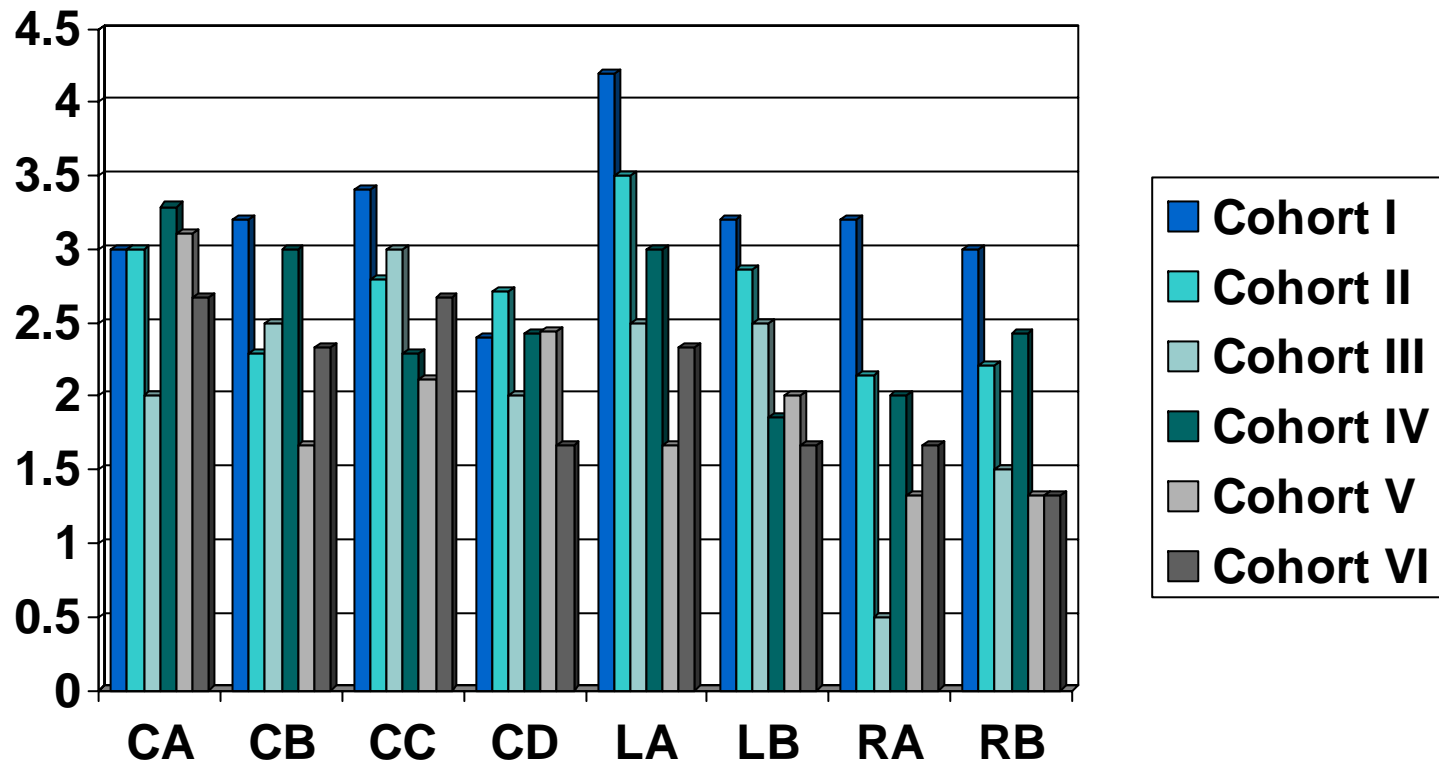
- Who cares? What do they care about?
 - Multiple constituencies
 - Multiple uses
- Program theory:
 - Why will this intervention work?
 - Logic models as measurement guides: don't forget the arrows



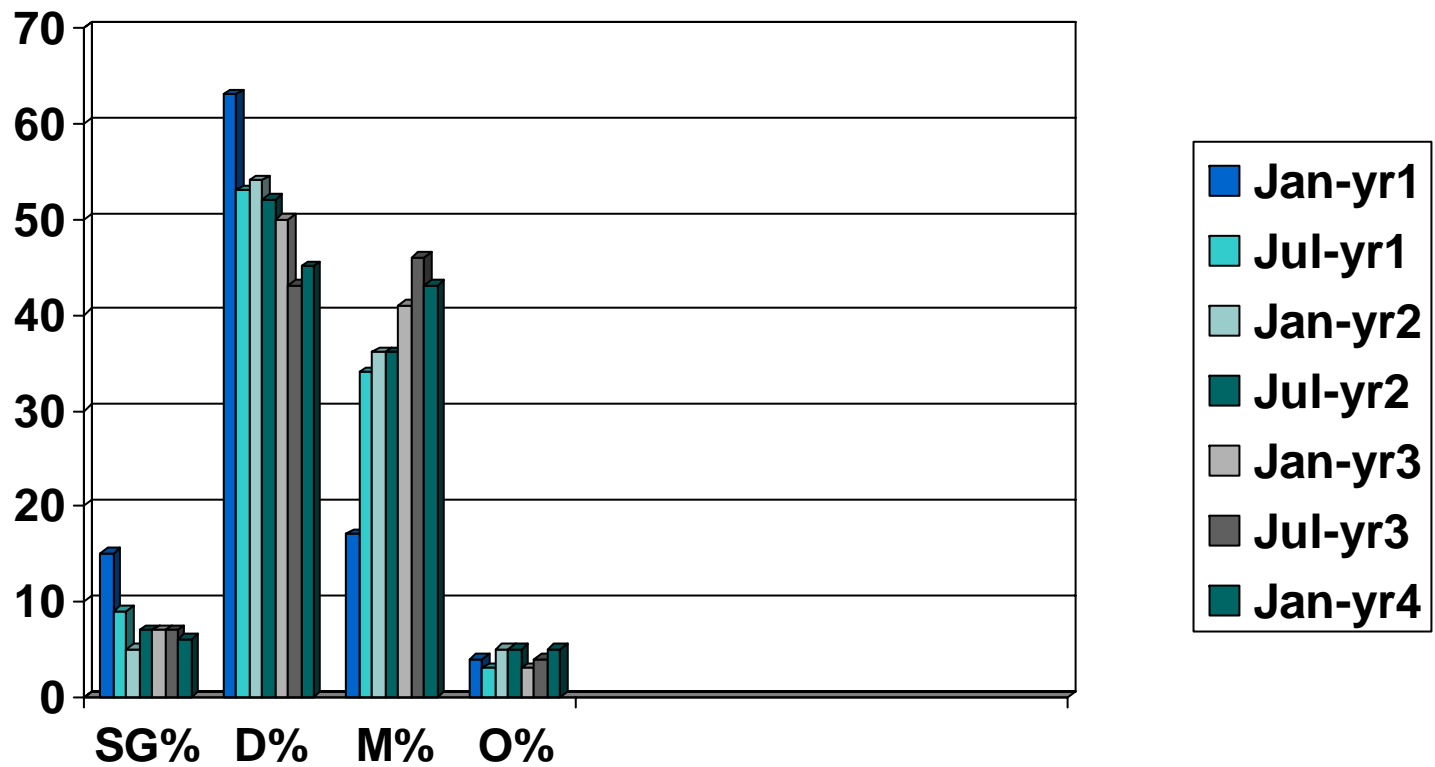
What Good is Process Evaluation?

- Outcomes without attribution
- Scaling implementation
 - Threshold analysis
 - State systems change

Accomplishment Ratings: Illustrative Example



Development Ratings: Illustrative Example





The Value of Secondary Data: God Bless Kansas

- Longitudinal data: 1998-2002
- Comparison data
 - Paired counties on mean baseline 30-day alcohol use (1998 CTC survey)
 - Use declined more in grantee counties ($p < .02$)
 - Eighth grade use increased in comparison counties